

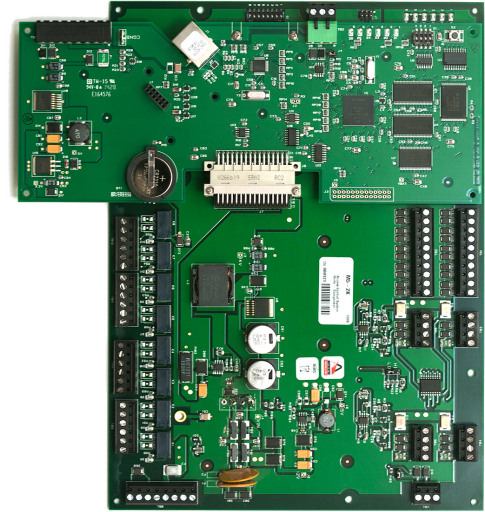
Mercury M5-2K Intelligent Controller

Authentic Mercury M5-2K is a multi-device interface panel for the replacement of the Casi M2000 reader controller. As with the entire Mercury M5 Bridge family of controllers, the M5-2K is made to match the existing form factor of the popular Casi Micro5 line of access control hardware allowing a fast “screwdriverless” changeover and easy migration of a Casi client infrastructure to any Authentic Mercury software partner.

Built to provide the ability to control access for four openings, this panel offers support for Four (4) F/2F protocol based readers capable of being individually configured. Additionally, the M5-2K has the native capability to monitor the door position, manage the door locking hardware and request to exit devices.

Application Notes

The M5-2K is an integral component in the Mercury M5 Bridge family approach to migrate any Micro5 hardware legacy to the flexible, feature-rich Mercury access hardware. When paired with a M5-IC, it ensures the customer an “Open” future based on Authentic Mercury controllers.

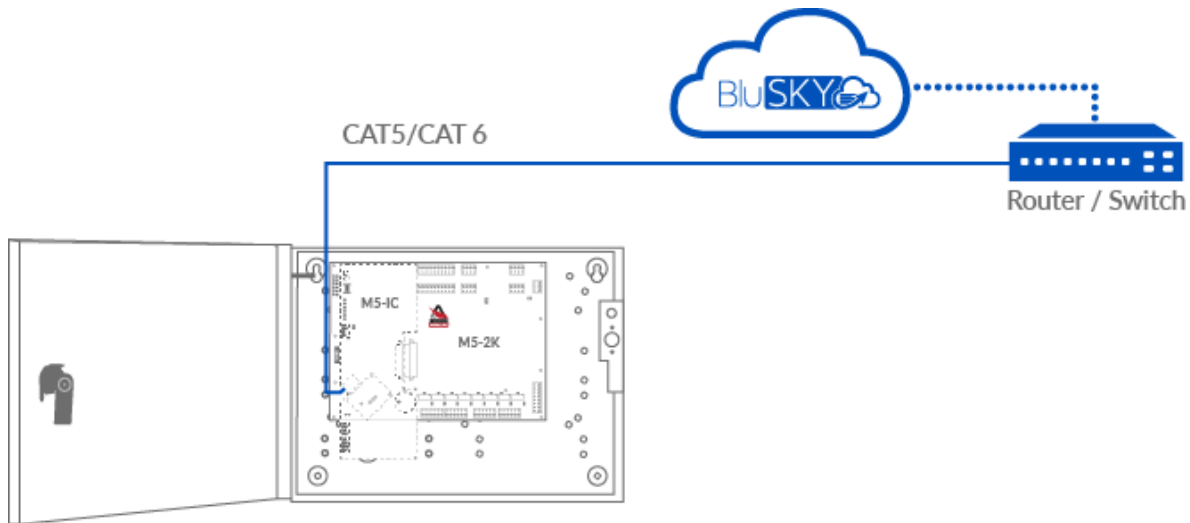


Features

- 4 Reader ports
- 8 Form C control relays
- 10 Supervised/unsupervised inputs
- F/2F & Supervised F/2F protocol support
- Supports additional RS-485 downstream hardware
- Plug for plug compatibility to Casi M2000
- AES 128 bit data encryption

Benefits

- Built-in capacity to control, respond to external device commands
 - Initiate commands by operator, by time schedules, or by events
 - Built on the Open Authentic Mercury platform
-



Specifications

The M5-2K is for use in low voltage, Class 2 Circuits only.

Primary Power:

- 18 Vac, 2.8 A maximum
- 12 Vdc output
- 550 mA maximum

UPS Battery (optional):

- 12 volt, 7 Ah rechargeable sealed (optional) lead-acid, 1 each supported Battery's approximate dimensions:
- L 5.94 in (151 mm)
- W 2.56 in (65 mm)
- H 3.74 in (96 mm)

Communication:

- 9600, 19200, 38400, or 115200 bps, asynchronous

Inputs:

- 10 unsupervised/supervised, standard EOL: 1K/1K ohm, 1 %, ¼ watt

Relay Outputs:

- 8 outputs, Form-C, 2 A @ 30 Vac/dc, resistive

Reader Interface: Power:

- 12 Vdc regulated, 300 mA maximum each reader port
DOx / External relay: Open collector, 40 mA sink maximum

Reader Data Inputs:

- F/2F compatible inputs

Reader Data:

- Use shielded cables 12 Vdc: 20 AWG, 500 feet maximum, reader powered by M5-2K board 18 AWG, 3000 feet maximum, reader powered locally

Outputs:

- As required for the load

Weight: (w/o connectors)

- 12.0 oz. (340.2 g) nominal without M5-IC
- 17.3 oz. (491.0 g) nominal with M5-IC

Temperature:

- -55 TO +85 °C storage
- 0 to +50 °C operational

Humidity:

- 5 to 95% RHNC

Standards:

- UL 294 Recognized
- CE Compliant, FCC

Size and Weight:

- 1.04"H x 8.375"W x 11.375"L | 5.3oz. (w/o M5-IC)
- 1.27"H x 8.375"W x 11.375"L | 5.3oz. (w/o M5-IC)

NOTE:

The above specifications are based on the typical 12 volt reader drawing 125 mA. Reader power requirements vary between different models. Excessive voltage drop on long cable runs may require a larger cable gauge for powering the reader from a local power source. Refer to the power specification for the reader being installed.

Ordering Information

MFG Part #	BluBOX Order #	Description
M5-2K	125-2400	MMercury M5-2K - Replaces the Casi M2000 reader controller

BluBOX: Security Re-Imagined

www.blubox.com

e. info@blubox.com

p. (844) 425-8209

FOLLOW US ON  

BluBOX Security, Inc. is a manufacturer and service provider of web-cloud based physical security products. Its BluSKY service delivers enterprise class unified access control, alarm management, video surveillance, biometrics and visitor management on any device, anywhere, any time. Its BluCHIP open hardware platform provides industry standard components and a proprietary line of fully integrated multi-factor, multi-biometric Person Readers.